

## NEW PRODUCT



### PIN Photodiode KDS1001AF2

#### Description

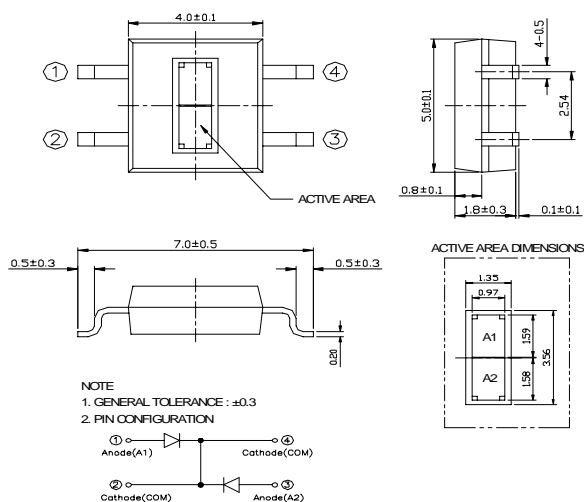
The KDS1001AF2 is a silicon PIN Photodiode has two active areas (Photodiodes) integrated in one chip



#### Features

- Two segmented photodiodes
- Flat plastic package
- Laser beam focusing / positioning is best performed
- High-speed response by PIN construction

#### Outline Dimensions



#### Application

- Automatic focusing of camera
- Sun sensor for the car air conditioner

#### Characteristics

[ $T_a = 25^\circ\text{C}$ ]

Description	Symbol	Condition	Min.	Typ.	Max.	Unit
Open Circuit Voltage	$V_{oc}$	$E_v = 1,000\text{lx}$	-	0.35	-	V
Short Circuit Current	$I_{sc}(A1)$	$E_v = 1,000\text{lx}$	18	21	24	$\mu\text{A}$
Collector Dark Current	$I_{sc}(A2)$		18	21	24	$\mu\text{A}$
Dark Current	$I_D$	$V_R = 10\text{V}$	-	-	20	nA
Capacitance	$C_T$	$V_R = 10\text{V}, f = 1\text{MHz}$	-	10	-	pF
Spectral Sensitivity	$\lambda$		450~1,050			nm
Peak Wavelength	$\lambda_p$		-	900	-	nm
Half Angle	$\Delta\theta$		-	$\pm 65$	-	deg.